

h minor.

I No. 9. Bachsches Catalogue

Praeludium pro Organo
cum pedale obligato

23

Joh. Seb. Bach.

Quintore

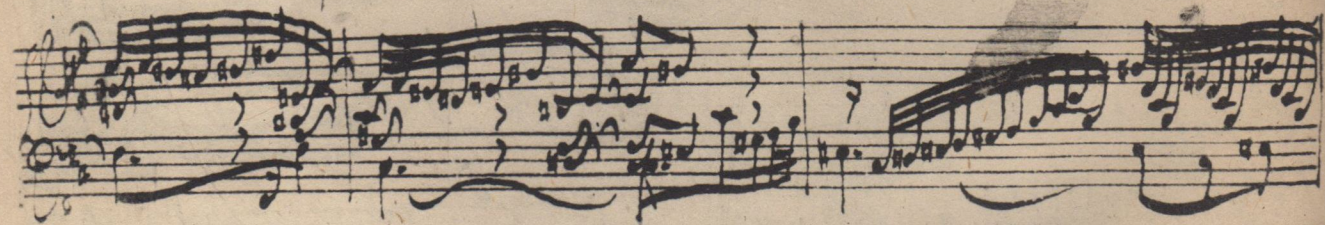
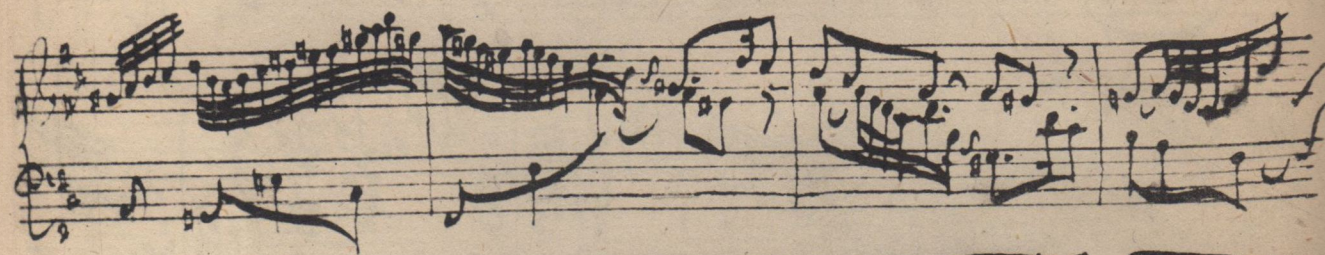
Autograph Joh. Seb. Bach's; mein
Vorfahr Herr von Feilich Roitzsch
Gesamthaber der Bachschen Orgelwerke
ist sehr merkwürdig.

Leipzig

in Christo Pausen-Musik

Præludium in Organo pleno pedale & Joh: Seb: Bach

This image shows a handwritten musical score for a prelude in organ full organ and pedal by Johann Sebastian Bach. The score is written on seven systems of two staves each, with the upper staff in treble clef and the lower staff in bass clef. The music is in G major and 3/4 time. The notation includes various rhythmic values, including eighth and sixteenth notes, and rests. The piece is characterized by its intricate texture and the use of the pedal, which is indicated by the 'pedale' in the title. The handwriting is in a cursive style typical of the 18th century.



Valli prof.



Handwritten musical notation on a five-line staff. The upper staff contains a complex melodic line with many sixteenth and thirty-second notes, while the lower staff has fewer notes, possibly representing a bass line or a different instrument part.

Handwritten musical notation on a five-line staff, showing a continuation of the complex melodic line with dense note clusters and some rests.

Handwritten musical notation on a five-line staff, featuring a melodic line with some large intervals and a bass line with rhythmic patterns.

Handwritten musical notation on a five-line staff, characterized by very dense, overlapping note clusters in the upper staff, possibly representing a complex texture or a specific instrumental effect.

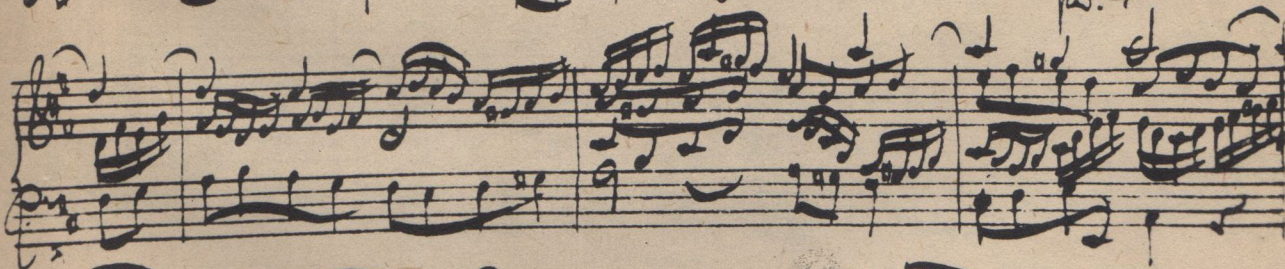
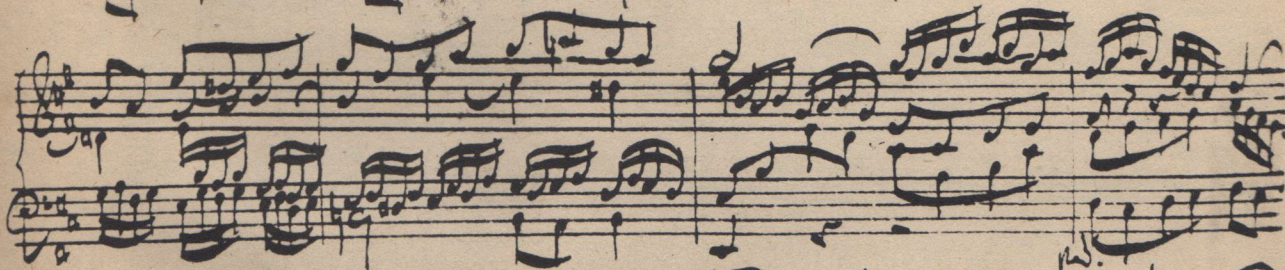
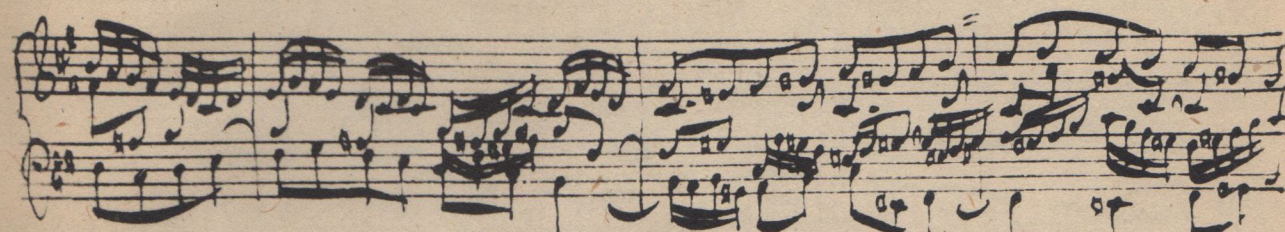
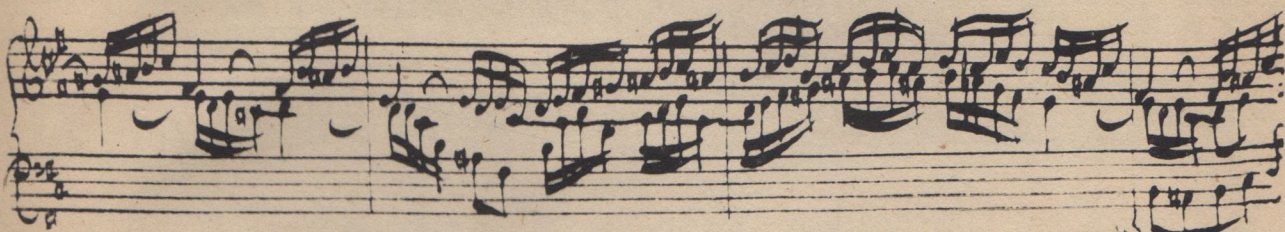
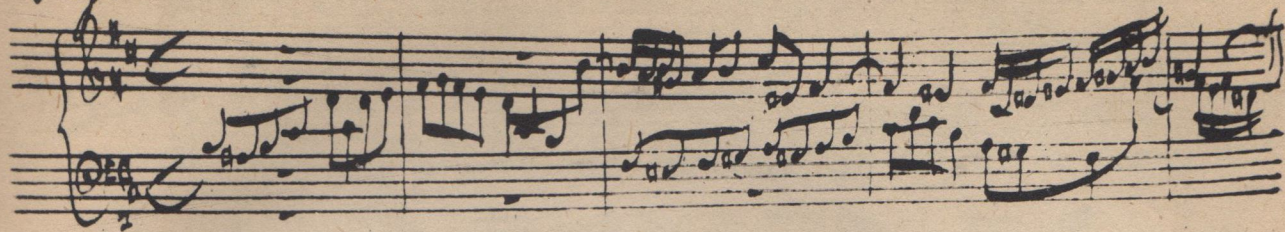
Handwritten musical notation on a five-line staff, showing a melodic line with some rests and a bass line with rhythmic patterns.

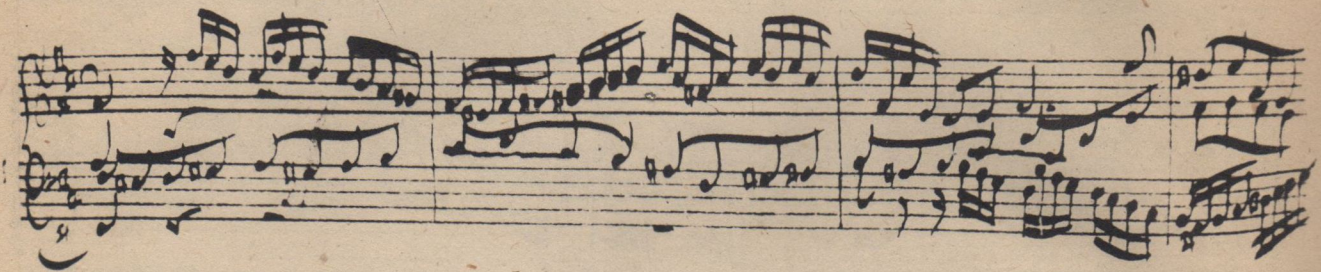
Handwritten musical notation on a five-line staff, featuring a melodic line with some large intervals and a bass line with rhythmic patterns.

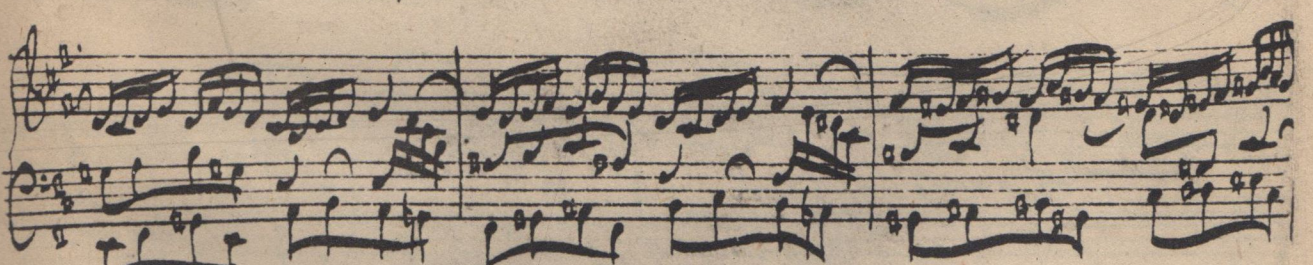
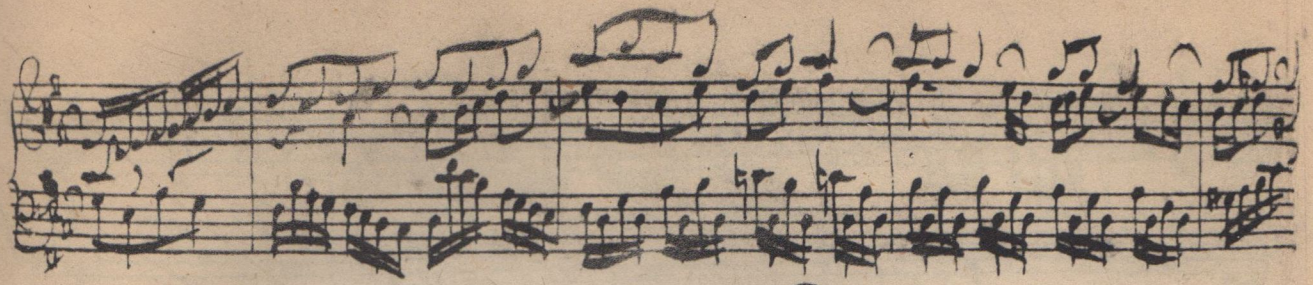
Handwritten musical notation on a five-line staff, showing a melodic line with some rests and a bass line with rhythmic patterns.

Handwritten musical notation on a five-line staff, featuring a melodic line with some large intervals and a bass line with rhythmic patterns.

Fuga







Handwritten musical notation on a five-line staff, featuring a treble clef and a key signature of one flat. The notation includes various note values, rests, and dynamic markings.

Handwritten musical notation on a five-line staff, featuring a treble clef and a key signature of one flat. The notation includes various note values, rests, and dynamic markings.

Handwritten musical notation on a five-line staff, featuring a treble clef and a key signature of one flat. The notation includes various note values, rests, and dynamic markings.

Handwritten musical notation on a five-line staff, featuring a treble clef and a key signature of one flat. The notation includes various note values, rests, and dynamic markings.

Handwritten musical notation on a five-line staff, featuring a treble clef and a key signature of one flat. The notation includes various note values, rests, and dynamic markings.

Handwritten musical notation on a five-line staff, featuring a treble clef and a key signature of one flat. The notation includes various note values, rests, and dynamic markings.

Handwritten musical notation on a five-line staff, featuring a treble clef and a key signature of one flat. The notation includes various note values, rests, and dynamic markings, ending with the word "Fine".